



O luce s.r.l.  
Uffici commerciali e stabilimenti:  
Via Brescia, 2  
20097 San Donato Milanese - Milano.  
T. 02) 98 49 14 35  
F. 02) 98 49 07 79  
[http: www.oluce.com](http://www.oluce.com)  
e-mail: [info@oluce.com](mailto:info@oluce.com)

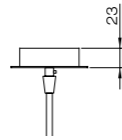
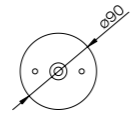
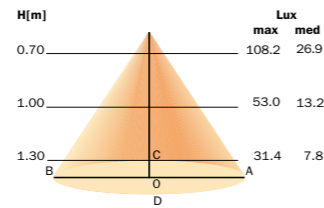
**KIN**

design Francesco Rota

**oluce**

**KIN**

design Francesco Rota



## KIN

design Francesco Rota

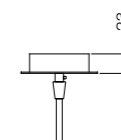
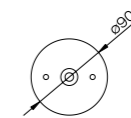
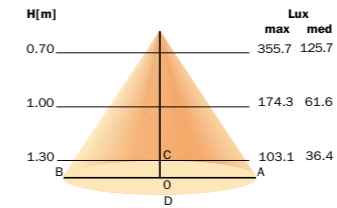
Nelle sembianze di un apparecchio di fusione di alluminio dalla classica forma “Cina” brilla questo nuovo cuore luminoso, realmente rivoluzionario. Il circuito LED inserito lavora a tensione di rete ed è dimmerabile.

Disponibile nei colori: bianco, nero, rame lucido.

Rosone verniciato bianco lucido.

### DATI TECNICI LED 220V

- Non necessitano di trasformatore
- Temperatura colore 3000°K
- 4W 320 lm
- 12W 940 lm



## KIN

design Francesco Rota

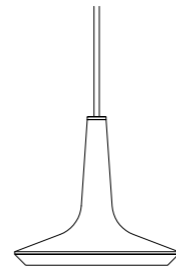
In the guise of a cast aluminium fixture with the classic “China” form, this new illuminated heart shines brightly, truly revolutionary. The new LED circuit works on mains voltage and moreover is dimmable.

Available in colors: white, black, glossy copper.

Canopy painted glossy white.

### TECHNICAL DATA LED 220V

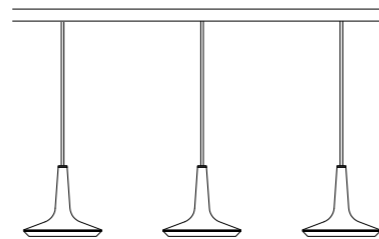
- No transformer needed
- Color temperature 3000°K
- 4W 320 lm
- 12W 940 lm



### Kin 478



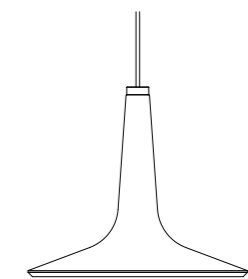
1 x max 4W (LED) 220V  
Ø cm 15



### Kin 478/3



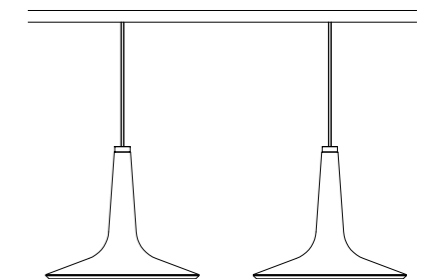
3 x max 4W (LED) 220V  
↔ 90 cm Ø cm 15



### Kin 479



1 x max 12W (LED) 220V  
Ø cm 30



### Kin 479/2



2 x max 12W (LED) 220V  
↔ 90 cm Ø cm 30